



TSX-V: TBLL
OTCQB: TBLLF

INVESTOR PRESENTATION – OCT. 2021

DEFINING OUR MINERALISATION, EXPANDING GERALDTON GOLD
CAMP'S RESOURCE TO ITS POTENTIAL

WWW.TOMBILLMINES.COM

COMPANY DISCLAIMER



Introductory Cautionary Notes

Tombill Mines Limited (“Tombill”) has taken all reasonable care in producing and publishing information contained in this presentation and website, and will endeavor to do so regularly. Material may still contain technical or other inaccuracies, omissions, or typographical errors, for which Tombill assumes no responsibility. Tombill does not warrant or make any representations regarding the use, validity, accuracy, completeness or reliability of any claims, statements or information on our site. Under no circumstances, including but not limited to, negligence, shall Tombill be liable for any direct, indirect, special, incidental, consequential, or other damages, loss of programs, loss of data, loss of use of computer or other systems, or loss of profits, whether or not advised of the possibility of damage, arising from your use, or inability to use, the material on our site. The information is not a substitute for independent professional advice before making any investment decisions. Furthermore, you may not modify or reproduce in any form, electronic or otherwise any information on our site, except for personal use unless you have obtained our express permission. The technical content of this presentation has been reviewed by Mr. Tim Twomey, P. Geo, a Qualified Person as defined by Canadian Securities Administrators National Instrument 43-101 “Standards of Disclosure for Mineral Projects.”

The TSX Venture Exchange has not reviewed the information on our website and do not accept responsibility for the adequacy or accuracy of it.

Forward-looking Statements

This presentation contains certain forward-looking statements as defined in the applicable securities laws. All statements, other than statements of historical facts, are forward-looking statements. Forward-looking statements are frequently, but not always, identified by words such as “expects”, “anticipates”, “believes”, “hopes”, “intends”, “estimated”, “potential”, “possible” and similar expressions, or statements that events, conditions or results “will”, “may”, “could” or “should” occur or be achieved. Forward-looking statements relate to future events or future performance and reflect Tombill management’s expectations or beliefs regarding future events and include, but are not limited to, statements with respect to the estimation of mineral reserves and resources, success of mining operations, the timing and amount of estimated future production, and capital expenditure.

Although Tombill believes the expectations expressed in such forward-looking statements are based on reasonable assumptions, such statements are not guarantees of future performance. The actual achievements of Tombill or other future events or conditions may differ materially from those reflected in the forward-looking statements due to a variety of risks, uncertainties and other factors.

These risks, uncertainties and factors include general business, legal, economic, competitive, political, regulatory and social uncertainties; actual results of exploration activities and economic evaluations; changes in costs; future prices of gold and other minerals; delays in exploration, development and any construction activities; changes in government legislation and regulation; the ability to obtain financing on acceptable terms and in a timely manner or at all; contests over title to properties; employee relations and shortages of skilled personnel and contractors; the speculative nature of, and the risks involved in, the exploration, development and mining business.

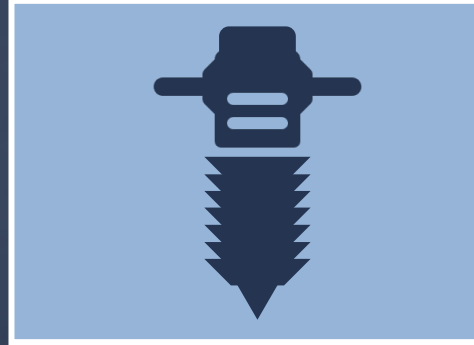
Adjacent Property Disclosure

The slides which follow are heavily reliant on disclosure related to properties adjacent to Tombill, and specifically the Hardrock Project which is discussed in detail. The qualified person for Tombill has been unable to verify the information contained in the adjacent property disclosure, and that the information is not necessarily indicative of the mineralization on the Tombill property. The disclosure related to the measured and indicated resource estimates on the adjacent Hardrock Property is based on a technical report on such property dated December 21, 2016 and filed on SEDAR by Premier Gold Mines Ltd. on December 22, 2016; and announcement of the results of an updated and Optimized Positive Feasibility Study for the Hardrock Project December 16, 2020 , filed on SEDAR.

INVESTMENT HIGHLIGHTS



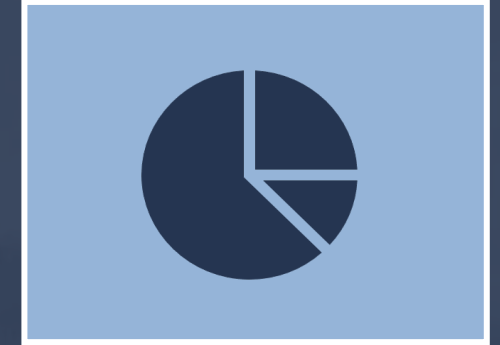
- Royalty-free claims in Geraldton Camp surrounded by (and on strike with) world-class Hardrock Project (starting construction soon)
- We confirmed westward extension of F-Zone 250m (TB21-005A/B/E) open down plunge from border at multiple intervals including:
 - 6.24g/t over 13.3m
 - 5.29g/t over 8.0m
 - 8.15g/t over 4.1m
- Over ~4.3 km strike, neighbours' resource:
 - 11.5 Moz resource (5.5 Moz P&P +2.6 Moz M, I, + 3.5Moz Inferred)
 - 2.1 Moz past gold produced (1938-70s)
 - Most westward hole on border: 18.49 g/t over 20.5m
- F-Zone – dominant target at Hardrock – over its strike has consistent dimensions of:
 - 25-35m width
 - 100-150m height
 - Just over 6g/t
 - Density ratio of 2.7x



- Goals:
 - Defining our mineralization
 - Expanding the Geraldton Camp's resource
- Specifically targeting
 - Continue establishing high-grade F-Zone continuity up to 2.5km from border
 - Seek surface options
- 3-Part program commenced in January 2021:
 - Deep drilling extension along established F-Zone strike
 - Near-surface drilling starting at the past-producing Talmora mine
 - Channeling/Surface geology North of Trans Canada



- Experienced Management Team: 3 senior geologists / executives instrumental in the execution and success of the Hardrock campaign
- 90+ years of collective mining & exploration experience



- Cash Position = CAD\$3.5M
- Family & Insiders own 61% of the company
- December 2020: 100% of Greenstone was divested, of which Centerra's 50% interest yielded US\$225M + US\$75M contingency

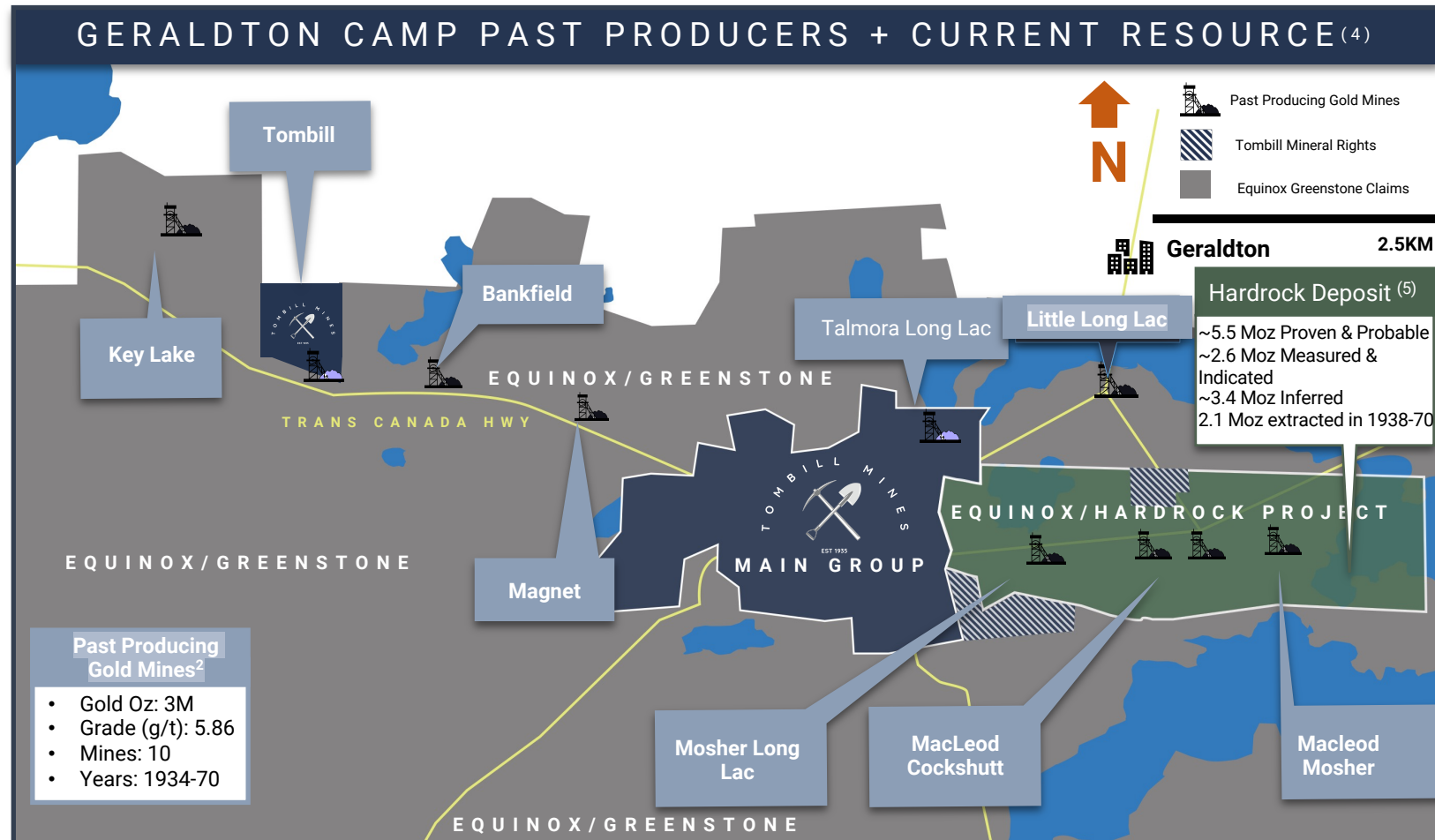
TOMBILL/GERALDTON CAMP RESOURCE & EXPLORATION



GOLD RICH HISTORY - CONTINUING - WITH NEW SIZABLE RESOURCES

Tombill: “Donut Hole” in Geraldton Gold Camp. World Class Resource of neighbor Hardrock Project:

- Historical district mining + current resource estimates **~13.6 Moz gold**
 - **11.5Moz currently resourced at Hardrock (1)**
 - **2.1 Moz mined at Hardrock in 1930’s-70’s**
 - **10 past producing local mines extracted 3Moz high grade (2)**
- Adjacent hole of **18.49g/t over 20.5m (MM170)** closest to our east boundary(2)
- **June 2021**, Tombill establishes open down plunge continuity from neighbor with **TB21-005A; 6.24g/t over 13.3m. Some 250m from border/400m from MM170**
- **17+ targets delineated at Hardrock (3)**



SOURCE: (1,4, 5) Equinox Gold Presentation dated Dec 12, 2020; (2) Premier Gold Press Release (Nov 4, 2010); (3,4) Innovexplo 2015

OUR LOCATION: GERALDTON GOLD CAMP



“DONUT HOLE” IN THIS WORLD CLASS RE-EMERGING GOLD CAMP

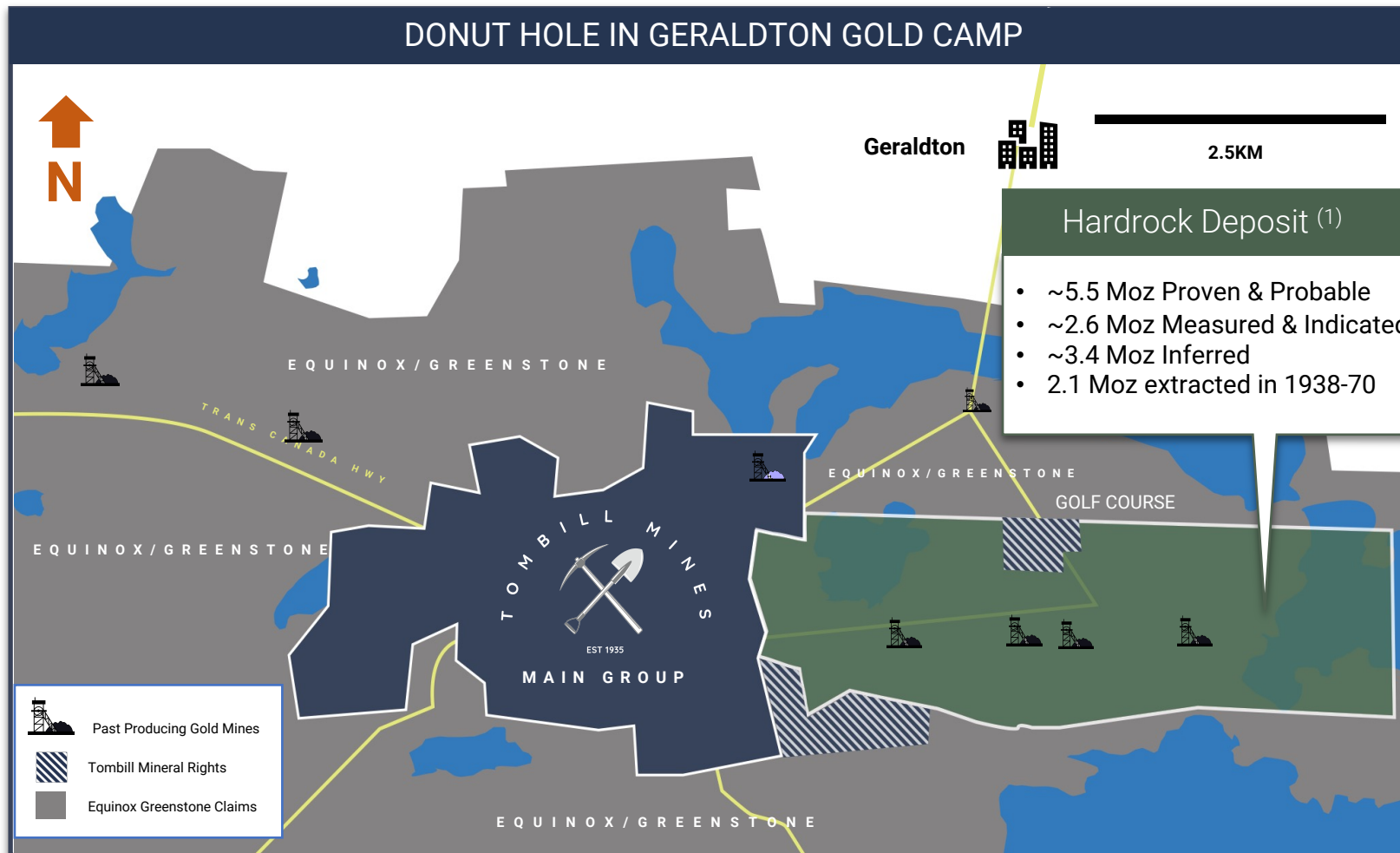
Tombill founded in 1935

Footprint: 3,050+ Acres with Until Now Sparse and Antiquated Historical Exploration

- Tombill Main Group sandwiched between the past-producing Magnet Mine and **Hardrock (2.1Moz UG at 4.83g/t)** ⁽²⁾

Patents: Vast majority of our claim's royalty-free

- **74 claims:** 60 are 100% owned/patents; 5 leased; and 9 mineral rights only



Equinox “aiming” to start Hardrock mine build Q4 2021⁽³⁾

- 600+ camp assembled
- CEO confirmed timing in most recent webcasts⁽⁴⁾

Geraldton: Superior Location/Optimal Jurisdiction

- 275 km by Trans Canada Hwy to Thunder Bay
- Supportive Pop.> 4,000
- Hardrock mine will add further infrastructure to access

SOURCE:

(1) Equinox Gold Presentation dated Dec 12, 2020; (2) InnovExplo 2015, (3) Premier /Equinox Gold Announces Friendly Acquisition by Premier Gold (Dec 16, 2020); (4) Crux Investor Interview Oct 2, 2021

ON STRIKE WITH HARDROCK, INCLUDING F-ZONE



F-ZONE, OVER HARDROCK: 6GPT; 30 X 125M DIMENSION; ~4.3KM STRIKE

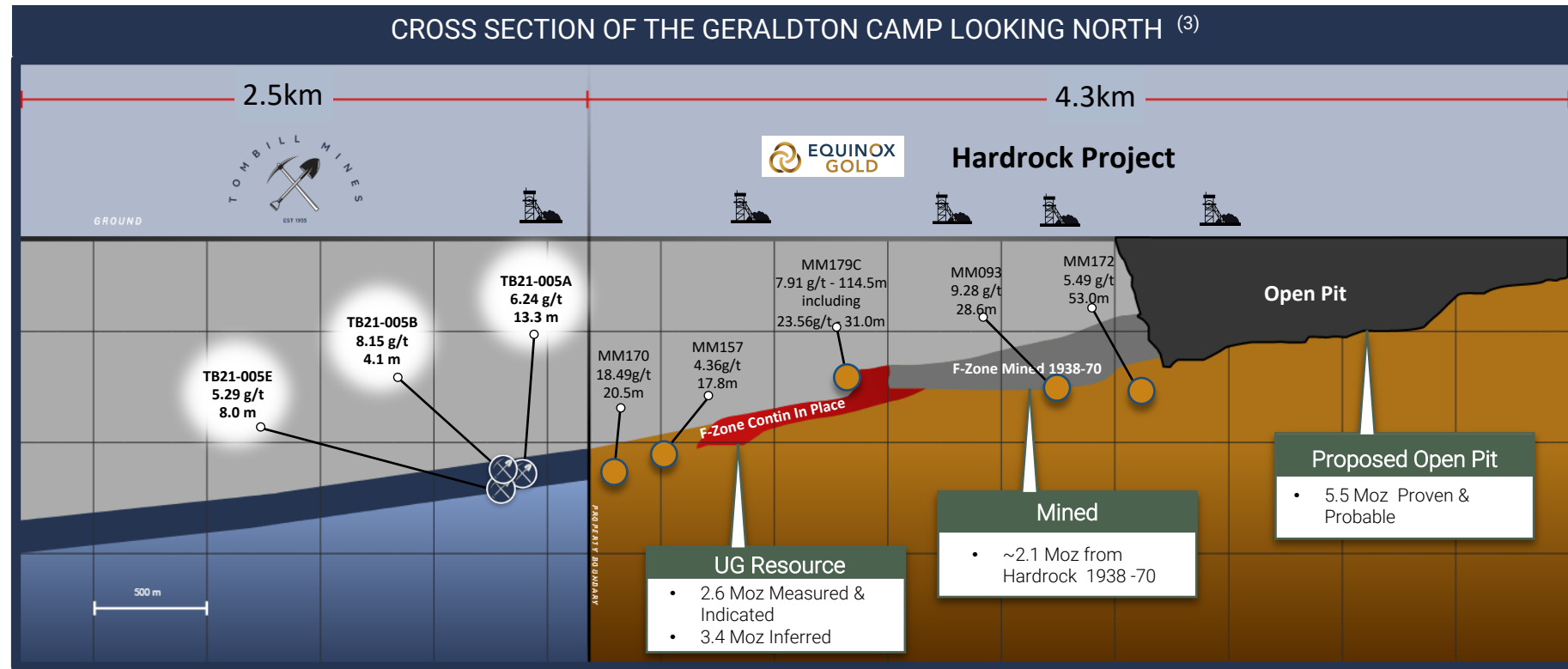
Hardrock: Dimension of F-Zone ^{(1) (2)}

- Gpt: Above 6 g/t
- Height: 100 - 150m
- Width: 25 - 35m
- Density ratio: 2.7x
- Strike: 4.3km, plunging east to west

Tombill: Proving F-Zone plunge over our 2.5KM strike. Our selected F-Zone intervals to date:

- Hole 5A: 6.24g/t – 13.3m
- Hole 5B: 8.15g/t -- 4.1m
- Hole 5E: 5.29g/t -- 8.0m
13.88g/t -- 2.0m(F2-Zone)
9.17g/t – 3.0m(F2)
- Strike: 250M from our border, 400M from Hardrock's most Westward Hole MM170 (18.5g/t – 20.5m)

- Results and lithologies consistent with Hardrock's



SOURCE:

- (1) InnovExplo Report (July 4, 2014)
- (2) Technical Report by Tim Twomey (July 17, 2020)
- (3) Premier press release (November 4, 2010) - This table contains information related to properties adjacent to Tombill, and specifically, the Hardrock Project. The qualified person for Tombill has been unable to verify the information contained in the adjacent property disclosure, and cautions that such information is not necessarily indicative of the mineralization on the Tombill property. See "Adjacent Property Disclosure" disclaimer.

F-ZONE LITHOLOGY SIMILAR TO HARDROCK



NOTE DEFORMED WHITE QUARTZ VEINS IN GREYWACKE

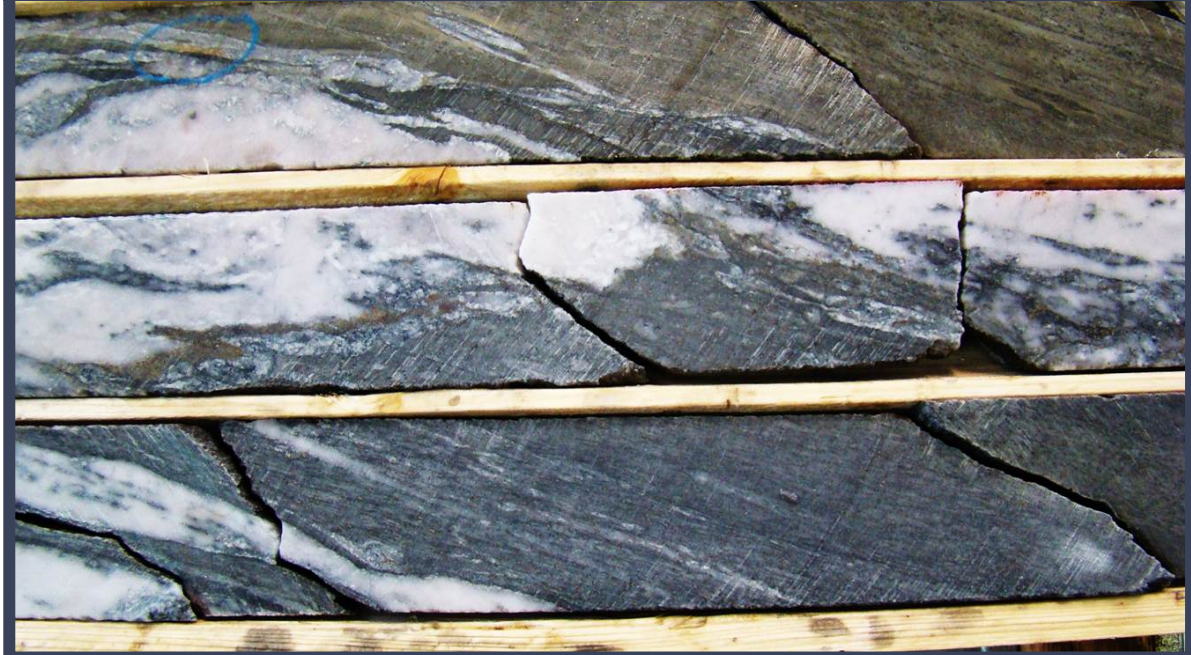
F-ZONE INTERCEPT

TOMBILL



Part of F-Zone drill intercept at **Tombill** from drill-hole **TB21-005A** at around 1105 m down-hole.

HARDROCK



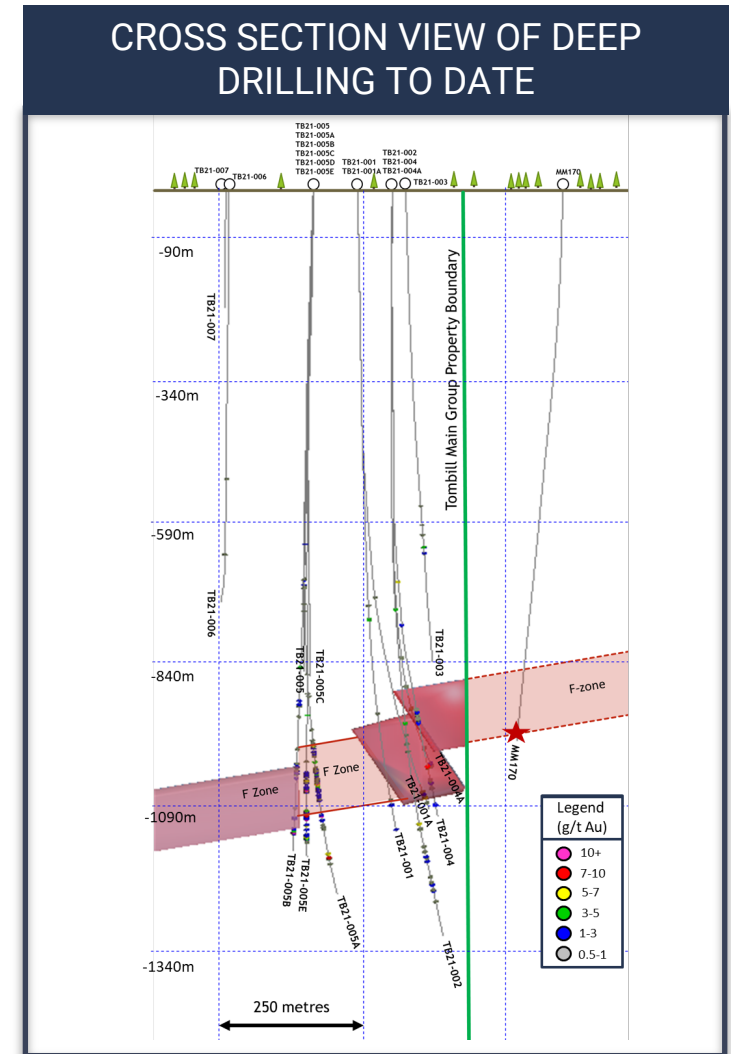
F-Zone mineralization in **core** from **Premier Gold Mines Limited (Hardrock)**, 2011.

OUR RESULTS CONFIRM EXTENSION OF F-ZONE DOWN PLUNGE



CONTINUITY OF F-ZONE IN PLACE ON TOMBILL

SIGNIFICANT RESULTS OF PHASE 1 DRILL PROGRAM TO DATE							
Hole-ID	Collar UTM	Azimuth/ Dip (degrees)	From (m)	To (m)	Length (m)	Au (gpt)	Zone
TB21-001A	Wedged at 400m on TB21-001 500987E, 5502807N		1191	1192	1.0	6.03	F
TB21-002 (drilled below F-Zone)	501048E, 5502609N	355/-82	768	769	1.0	4.21	HW
			1203	1203.8	0.8	6.90	K
TB21-004	501048E, 5502609N	358/-78	757.7	758.7	1.0	5.29	UM
			1242.4	1244.5	2.1	4.50	F
TB21-005A	Wedged at 600m on TB21-005 500909E, 5502915N		1018.5	1022.7	4.2	2.99	SP
			1078	1081.5	3.5	2.05	F
			1095	1108.3	13.3	6.24	F
TB21-005B	Wedged at 636m on TB21-005A 500909E, 5502915N		1214.0	1218.1	4.1	8.15	F
TB21-005E	Wedged at 550m on TB21-005 500909E, 5502915N		1085.0	1087.0	2.0	6.08	F
			1102.0	1110.0	8.0	5.29	F
			1152.0	1154.0	2.0	13.88	F2
			1162.0	1165.0	3.0	9.17	F2

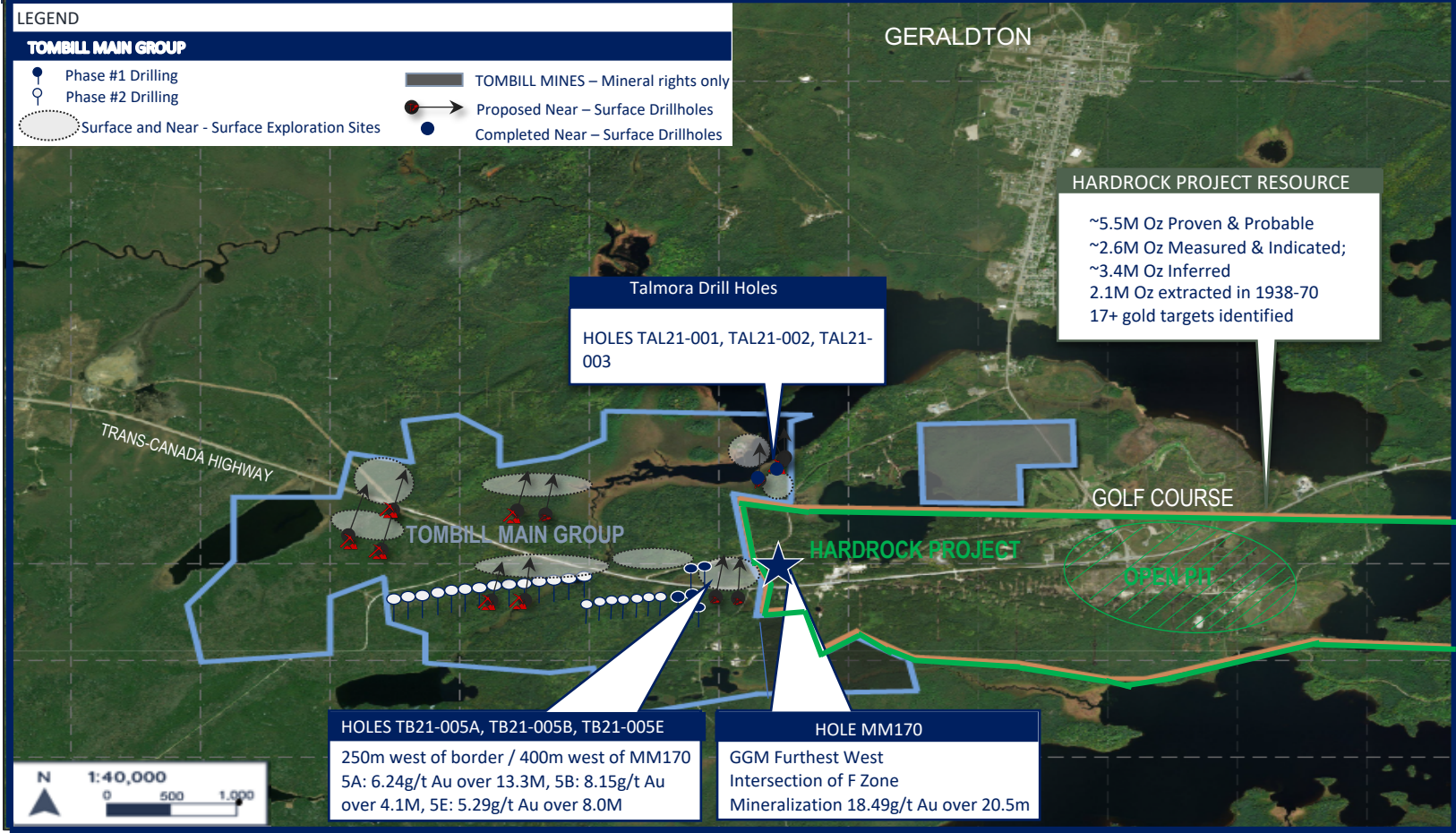


OUR EXPLORATION PROGRAM



COMBINATION OF CHANNELLING, NEAR-SURFACE / DEEP DRILL PROGRAMS

TOMBILL EXPLORATION AND DRILLING PROGRAM



Until Jan 2021, Tombill Saw No Exploration Since the 1970's

Phase 2 Exploration Program:

- Phase 1 deep drilling program of ~15,000m/14 holes
 - Phase 2 of ~69,000m/63 holes
- Channeling/near surface geology covering 14 targets
- Surface drilling (~400m/hole) over 3 holes
 - Phase 2 of ~10,000m/25 holes

Further Potential for Lower-Grade Near-Surface Gold Deposits Historically Mined in the District

Potential Targets from our Exploration Program

- Continuity of F-Zone strike now established on Tombill
- Open pit hope

DEEP DRILLING PROGRAM



DEEP DRILLING & NEAR SURFACE CAMPAIGN ON TOMBILL MAIN GROUP

Last exploration of Tombill was in the 70's- very marginal

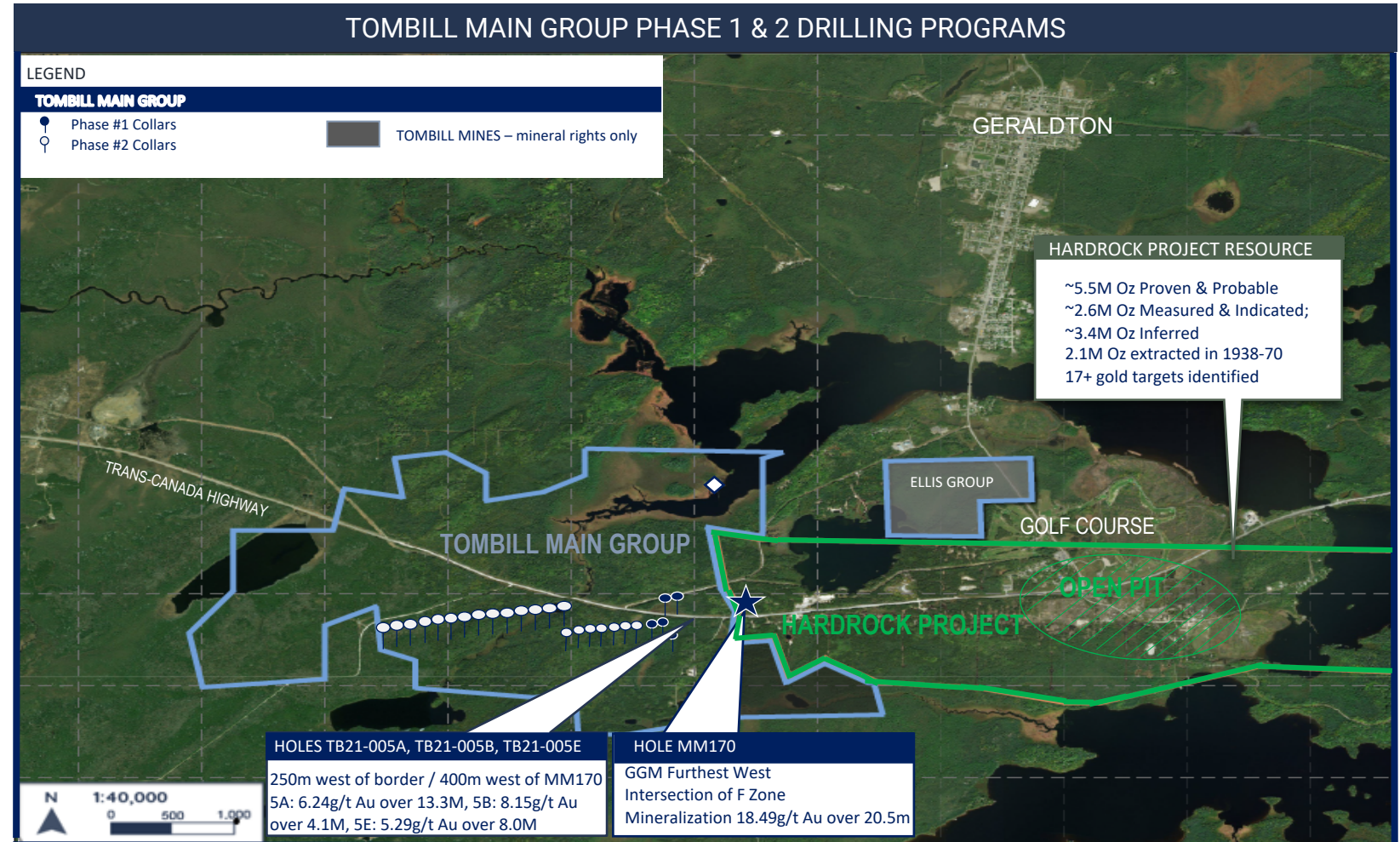
- Devoid of current geological exploration tools and techniques
- Jan 2021 -- 1st deep drilling ever on Tombill

Phase 1: ~15,000m/14 holes

- Commenced early Jan. 2021
- Up to 250m from border, extension of F-Zone established with similar attributes to Hardrock geology/resource

Phase 2: ~63,000m/63 holes

- Extend and follow F-Zone on strike from Phase 1 of 250m up to 2.5km
- Collars south of Trans Canada drilling north direction into mineralization



SHALLOW DRILL PROGRAM



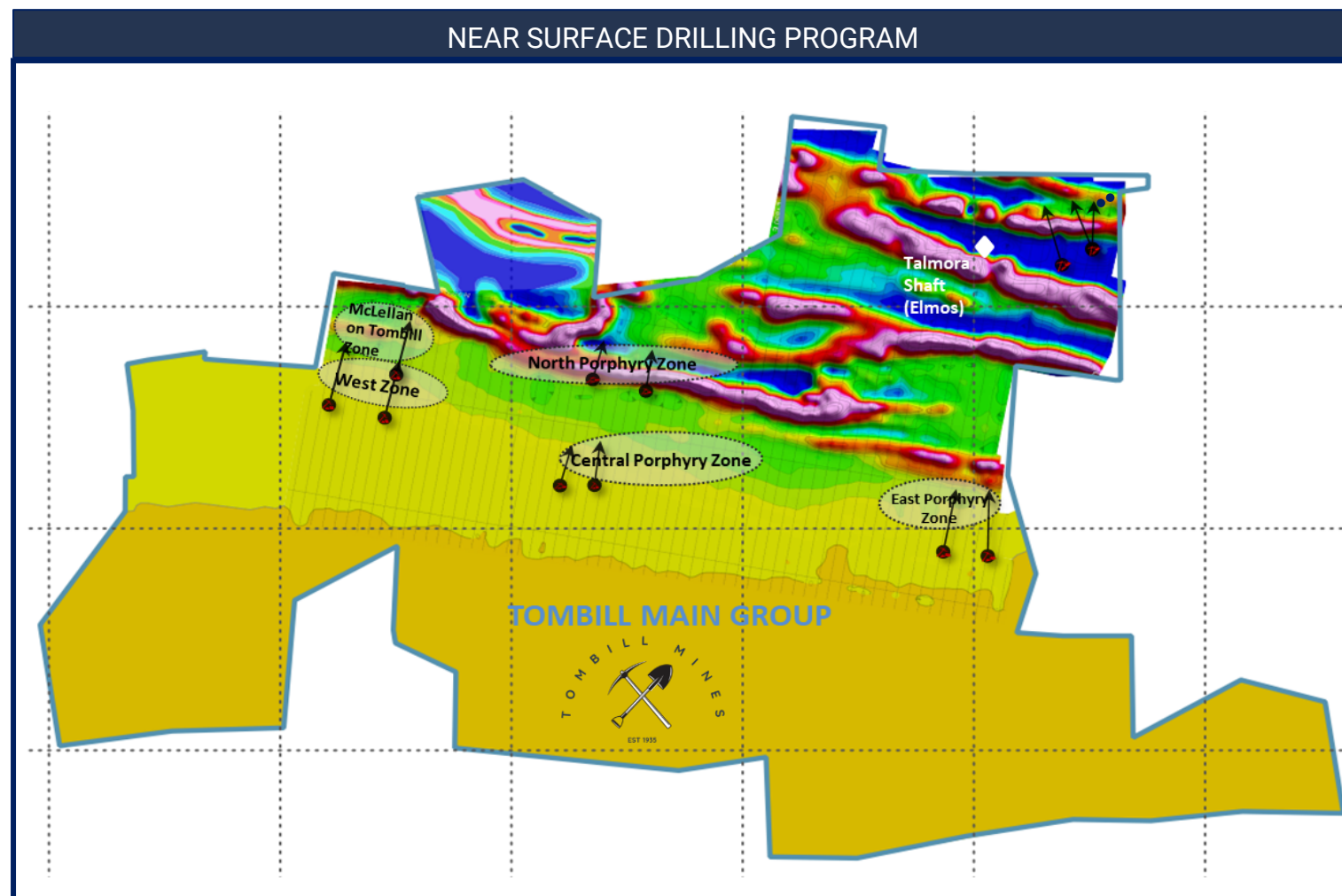
COMMENCED SEPTEMBER 2021 AT TALMORA, OUR PAST PRODUCING MINE

Phase 1:

- Drilled 3 holes over 1,200m, 300-450m / hole. Await results
- Drilled around Talmora (NE corner), our past-producing gold mine
- UAV-MAG survey completed in Feb 2021 by Abitibi

Phase 2:

- Near surface-drilling of ~10,000m over ~25 holes
- Evaluating 5 other shallow target areas via channeling and near surface geology



SOURCE:
Abitibi Mag Study for Tombill—Feb 2021

CHANNELING & NEAR SURFACE GEOLOGY PROGRAM



12+ EXPLORATION TARGETS IN NORTHERN HALF OF TOMBILL MAIN GROUP

Past local producers/explorers devoted no emphasis in looking for low grade open-pit gold

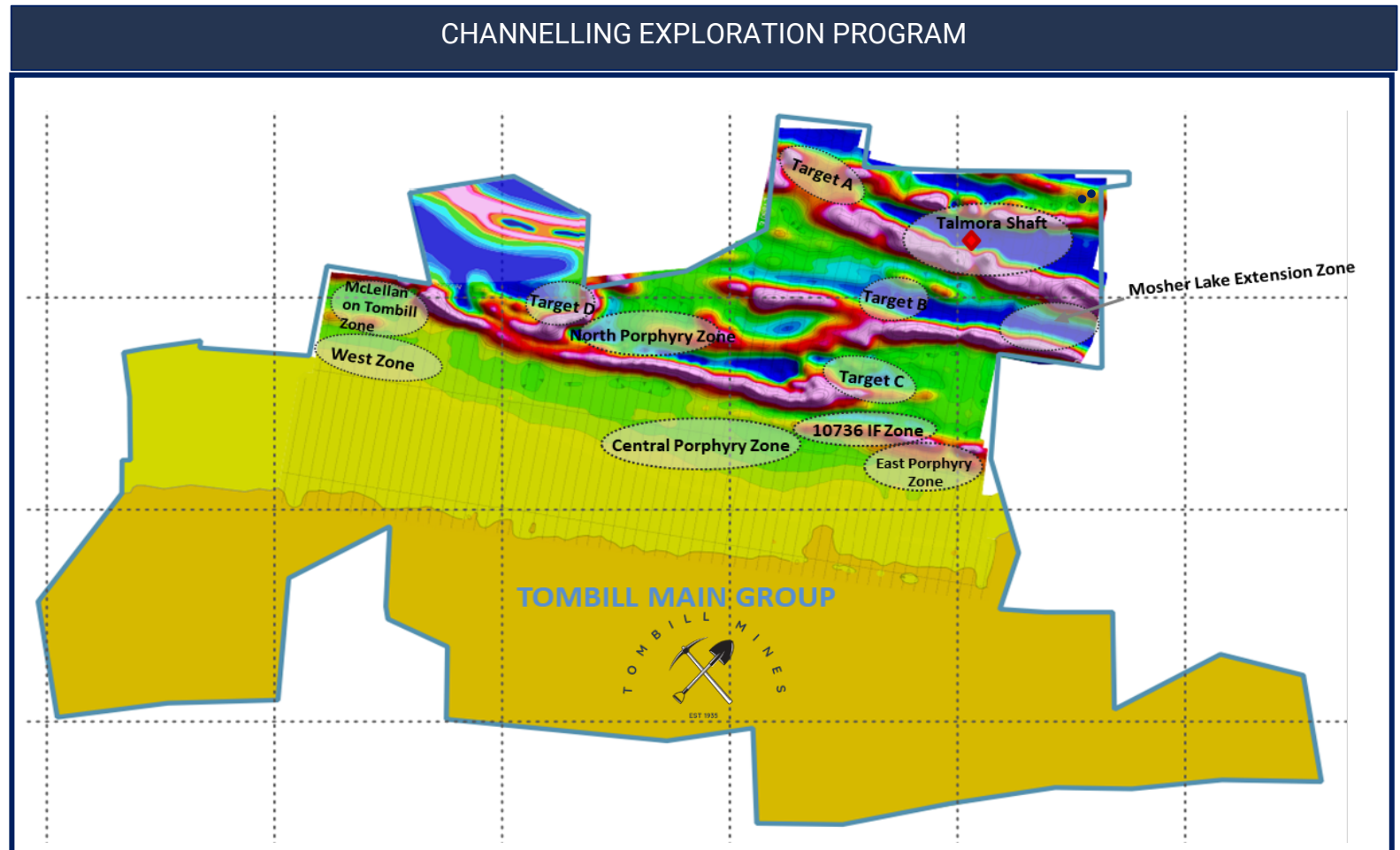
12 potential targets identified for channeling and surface geology

Phase 1:

- Sizeable grab samples assayed showing some strong g/t's from the East Porphyry target. Selected results include:
 - 24.3 g/t – Greywacke
 - 14.9 g/t – Mineralized BIF
 - 4.37 g/t – Greywacke

Phase 2:

- Continue channeling across various targets



SOURCE:
Abitibi Mag Study for Tombill—Feb 2021

EXPERIENCED & PROVEN TEAM



TOP NOTCH TEAM WITH UNPARALLELED KNOWLEDGE OF GERALTON CAMP

MANAGEMENT

Adam Horne	CEO
Tom Rowcliffe	CFO
Thanos Pythagoras	Financial Controller
Reda Jalabi	IR & Corp. Development

EXPLORATION

Dave Laudrum	Exploration Manager
Michael Nerup	Senior Geologist
Kevin Sinnott	Senior Geologist
Holly Zhu	Geologist
Benjamin Cleland	Consulting Geologist
Tim Twomey	Senior Advisor, Geology

Team of Geotechs

ADVISORY BOARD

Quinton Hennigh	Chmn & Pres. Novo Resources
Gordon Reid	Ex-COO of Centerra
Ian Stalker	Founder, Director, ex-CEO K92



BOARD OF DIRECTORS

Adam Horne	Chairman
John Alexander	Director
Ray Davies	Director
Giuseppe Ciardi	Director
Mark Colman	Director

Incentivized & Seasoned Leadership

Local Knowledge: Hardrock Senior Geo Team + Ex COO of Centerra

Capital Markets & Cost of Capital Focused

Experienced, Involved Broad-Ranging Advisory & Board of Directors

Insiders own 61%, and all Advisory Board own or manage sizeable holding

CAPITAL STRUCTURE



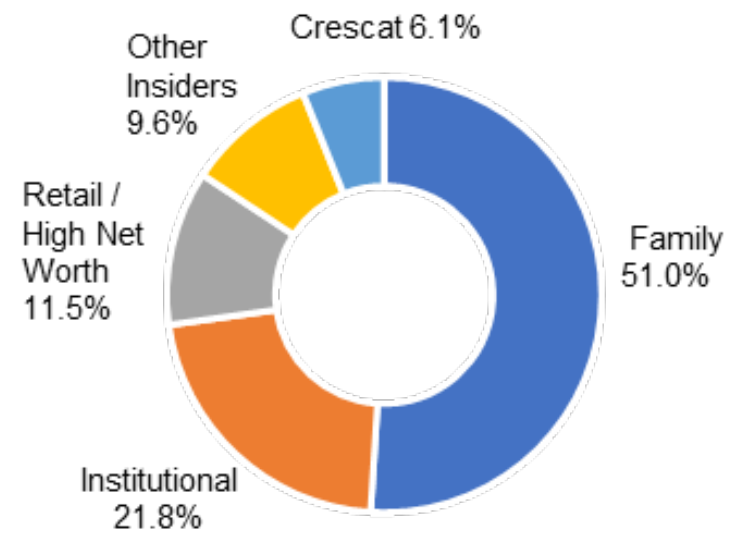
CAPITAL STRUCTURE

Shares Issued & Outstanding	153.8 M
Warrants (@ avg C\$0.24)	38.8 M
Options (@ avg C\$0.16)	9.3 M
Fully Diluted Shares	201.8 M
Cash	C\$3.5M
Debt	–

LISTING

TSX-V	TBLL
OTCQB	TBLLF

SHAREHOLDER BASE



INSTITUTIONAL HOLDERS

- Tombill has a broad shareholder base with strategic long-term shareholders and a balanced mix of institutional, high-net worth and retail investors.
- Insiders hold approximately 61% of the Company.

SUMMARY-RE CAP



“CLOSEOLOGY” PLAY IN WORLD CLASS GERALDTON CAMP

- “Donut hole” surrounded by and on strike with Hardrock
- World class gold mine being built on door-step
- Neighbor claims construction begins this quarter, production 2024

SIZABLE LOCAL GOLD MINERALIZATION ON STRIKE WITH TOMBILL

- Hardrock deposit: ~13.6Moz gold over ~4.3km strike, of which:
 - 5.5M Proven & Probable (open pit)
 - 2.6M M + I; 3.4M Inferred (ug west plunge from open pit)
 - 2.1M extracted 1938-70
- 3.1Moz high grade mined in Camp from 1930’s-70’s
- Until Jan 2021, Tombill not explored since 1970’s

ESTABLISHED CONTINUITY OF STRIKE/RESOURCE OVER TOMBILL

- Established resource continuation with TB21-005A, TB21-005B, TB21-005E up to 250m from our border
- Drilled shallower amongst our past-producing Talmora Mine. Looking at open pit and surface potential there
- Aim to make the Geraldton Camp a much larger resource pool

TOP TEAM EXECUTING IN OPTIMAL MINING JURISDICTION/LOCATION

- “A” Team: Includes 3 sr geo’s and execs who proved Hardrock and invested multi-millions of capital from 2008 to 2020
- Royalty-Free
- Own patents
- Ultimate Jurisdiction/Top Location
- No exploration permits required

NEIGHBOUR VALUATION TARGET

- Dec 2020, Centerra divest 50% interest (non control) to Orion; US\$225M + US\$75M

**TOMBILL IS
UNIQUELY
POSITIONED
TO EXECUTE
ON ITS PLAN
& DELIVER
VALUE TO OUR
SHAREHOLDERS**



TSX-V: TBLL
OTCQB: TBLLF

Adam Horne

Chairman & CEO

Office: +44 (0) 207 529 2351

Mobile: +44 (0) 7768 258 126

adam@tombillmines.com

Reda Jalabi

Corp. Development & IR

Office: +44 (0) 207 529 2361

Mobile: +44 (0) 7899 870 503

reda@tombillmines.com

**26 Grosvenor Gardens
London , SW1W 0DH, UK**

Office: +44 (0) 207 529 2354

ir@tombillmines.com

WWW.TOMBILLMINES.COM



TSX-V: TBLL
OTCQB: TBLLF



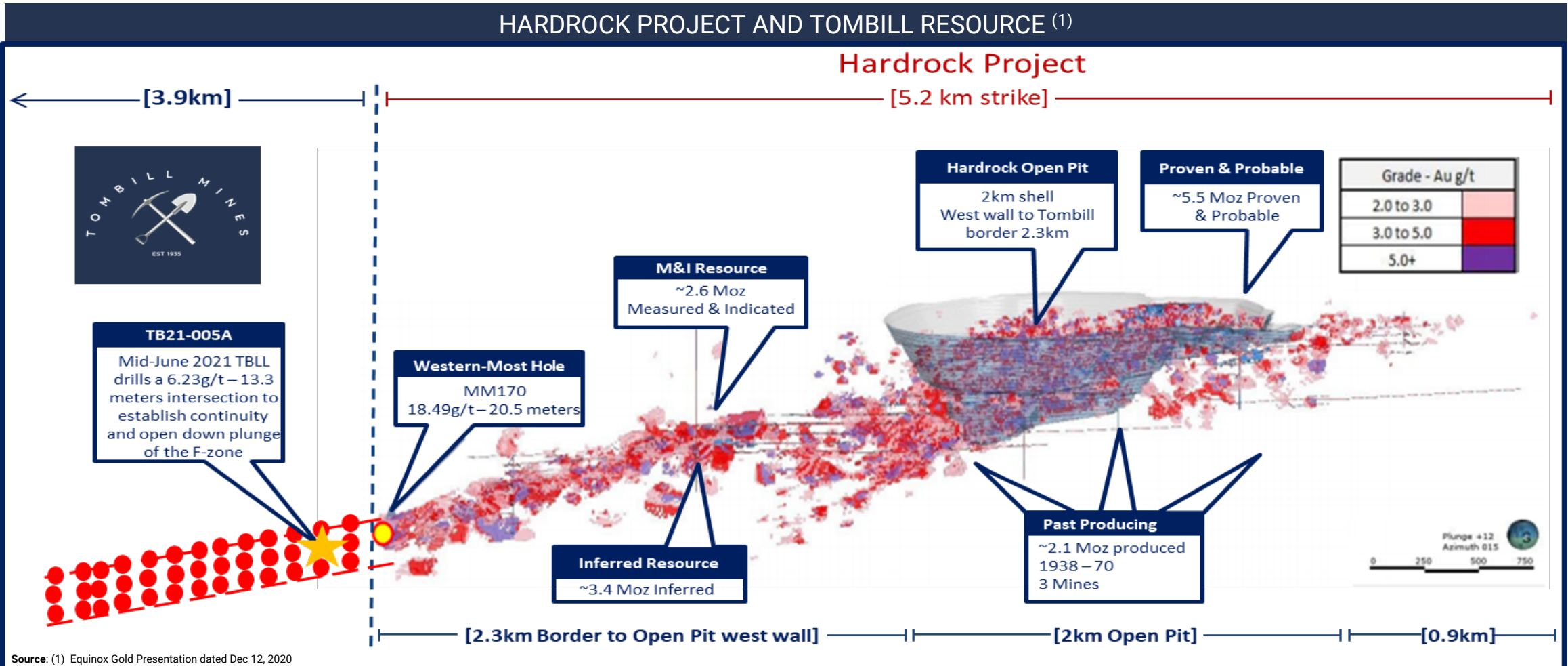
APPENDIX

WWW.TOMBILLMINES.COM

ON STRIKE WITH MULTI-TARGETS & F-ZONE



MULTIPLE ZONES STEM WESTWARD ACROSS LARGE PART OF HARDROCK & CONFIRMED ON TOMBILL



TOMBILL ORG CHART



BOARD OF DIRECTORS

Ray Davies
Director

Mark Colman
Director

Giuseppe Ciardi
Director

John Alexander
Director

Adam Horne
CEO, COB

ADVISORY BOARD

Gordon Reid
Ex-COO of Centerra

Ian Stalker
Founder, ex-CEO K92

Quinton Hennigh
Crescat

FINANCE, CORPORATE, IR

Reda Jalabi
IR, Strategic Development

Tom Rowcliffe
CFO

Thanos Pythagoras
Financial Controller

EXPLORATION, GEOLOGY

Dave Laudrum
Exploration Manager

Michael Nerup
Senior Geologist

Kevin Sinnott
Geologist

Holly Zhu
Geologist

Tim Twomey
Sr Advisor, Geology

Benjamin Cleland
Consulting Geologist

Team of Geotechs

MANAGEMENT, BOD & ADVISORY BOARD



Adam Horne – Chairman & CEO

Adam is Managing Partner of Caledon Partners, a hedge fund based in London. Prior, he ran the European Media Investment Banking Group at Credit Suisse First Boston in London, and was at Morgan Stanley in NY. At both firms, he executed many equity/debt financings and M&A transactions. He has sat on various other boards, and is a director of a large charitable foundation.

Tom Rowcliffe – CFO

Tom is a chartered accountant with 14 years experience in mining and oil & gas. He has held senior positions at fast growing companies such as Trafigura and Endeavour Mining Corporation. Tom's experience in accounting and finance are complimented by his commercial exposure to precious metals royalties and refining & offtake agreements.

Dave Laudrum – Exploration Manager

Dave is a Canadian Professional Geologist with over 30 years of experience on a wide range of mine production and advanced exploration projects with junior and senior mining companies. He has held roles including Project Manager, Chief Mine Geologist and Exploration Manager for a variety of companies. Prior to Tombill, Dave was the Technical Services and Mineral Resource Manager at Barrick Gold's Hemlo Mine in Marathon, Ontario.

Tim Twomey – Senior Advisor, Geology

Tim is a professional geologist with over 35 years of exploration, production and mgmt expertise. Prior, he was VP Exploration for Premier Gold, leading the Hardrock Project from inception in 2008 until 2012. Also Tim was Sr. Geologist for Goldcorp at the Red Lake Mine and was involved in the discovery of the High Grade Zone there.

Giuseppe Ciardi – Director

Giuseppe is an investment advisor to a European family office and has over 40 years of capital markets experience. He was a founding partner at a London-based hedge fund. Prior, he was a partner at BNP's Proprietary Trading desk, and Lazard's Capital Markets Group.

Mark Colman – Director

Mark worked in investment banking and ECM for 25 years with Morgan Stanley (London, NY, Tokyo), Bear Stearns, and Bloomberg before founding his own financial advisory business, Alta Capital. He serves on a number of corporate and philanthropic boards. Graduate of Harvard and Harvard Business School.

Dr. Quinton Hennigh – Advisory Board

Quinton is an eco geologist with 25 years of exploration experience and founder, Chmn and President of Novo Resources – a developing gold project in W. Australia. Prior to, Quinton explored for major mining firms including Homestake, Newcrest, and Newmont. He then joined the exploration mining sector in 2007 and has been involved with several Canadian listed gold companies.

Gordon Reid – Advisory Board

Gordon has 40 years of experience in the mining industry working for many of the largest global mining companies in senior positions such as Noranda, Rio Algom, and Placer Dome. His last 15 years were at Centerra, the prior recent owner of 50% of Greenstone, including the Hardrock Project. There, Gordon held multiple and uniquely different leadership roles, ultimately becoming COO in 2013.

Ian Stalker – Advisory Board

Ian is a senior international mining exec with over 45 years of experience in resource development. He has directed over 12 major gold, base metal, industrial minerals projects at various phases, from exploration drilling to start-up. Ian was CEO of LSC Lithium, and is Director of K92 Mining (which he founded and was CEO).

Ben Cleland – Consulting Geologist

Ben is a geologist with over 12 years experience. He spent 6 years as a geologist at Greenstone and its Hardrock Project, of which from 2013 to 2016 he was Manager Geology, being the camp's sr exploration geologist. He graduated from Carleton.

Ray Davies – Director

Ray is CEO of Talmora Diamond a diamond exploration company in the NWT. Previously Director of Corporate Geology for Hudson Bay Mining & Smelting and VP of Lytton Minerals. He has been on the Board and provided consulting services to many exploration companies.

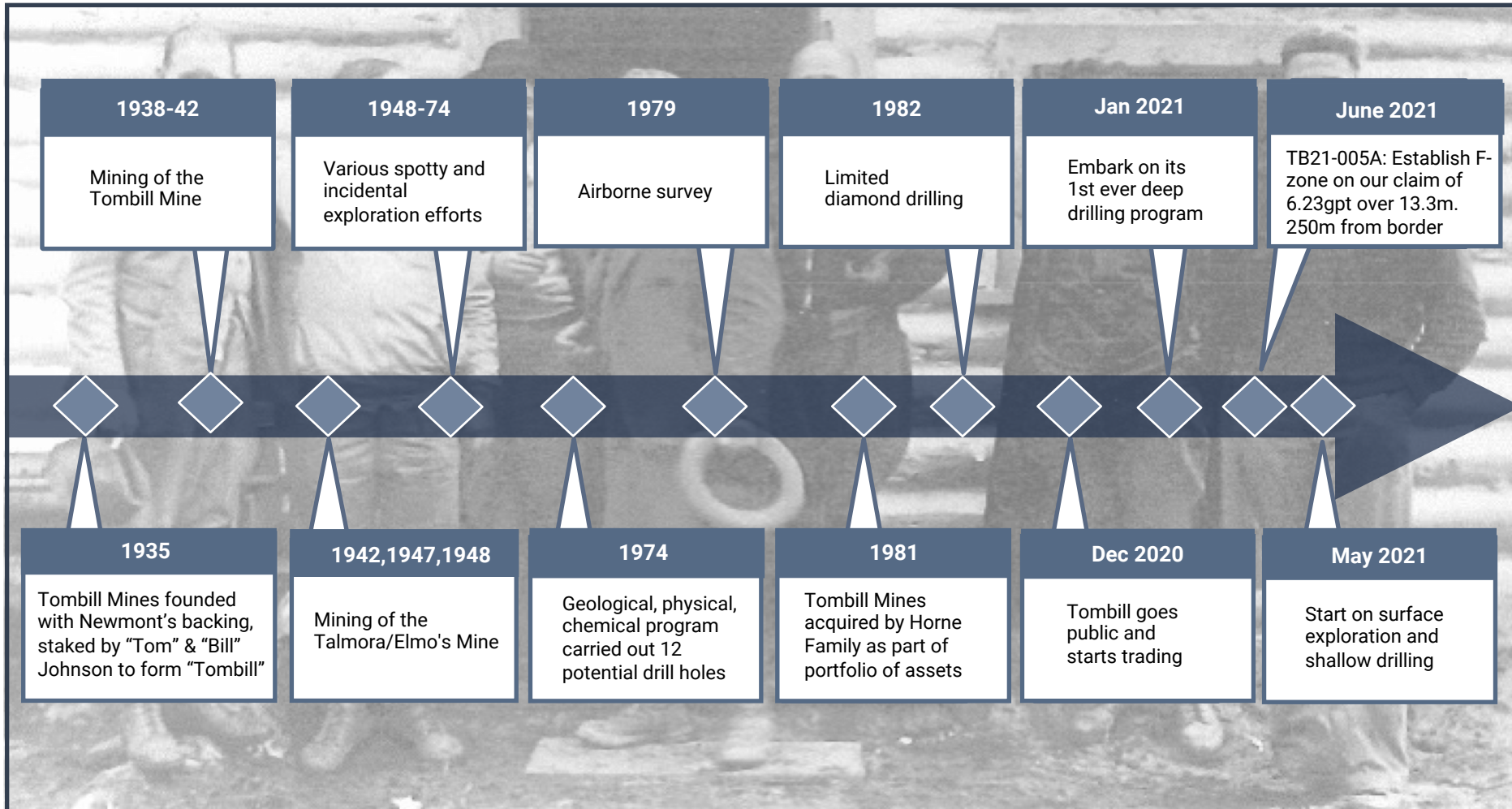
Reda Jalabi – IR & Corp Development

Reda worked in Investment Banking for 7 years at JP Morgan across M&A and DCM covering Europe and the Middle East. He then joined a London-based multi family office. Graduated from the University of Pennsylvania.

HISTORY OF TOMBILL MINES



GERALDTON CAMP EVOLVED FROM 1930'S



Tombill founded in 1935 by "Tom" & "Bill" Johnson with help from Newmont Gold

Over 3Moz was mined in Geraldton Gold Camp from 1934 to 1970 over 10 separate mines

Very little exploration with modern methods applied to Tombill until early 2021

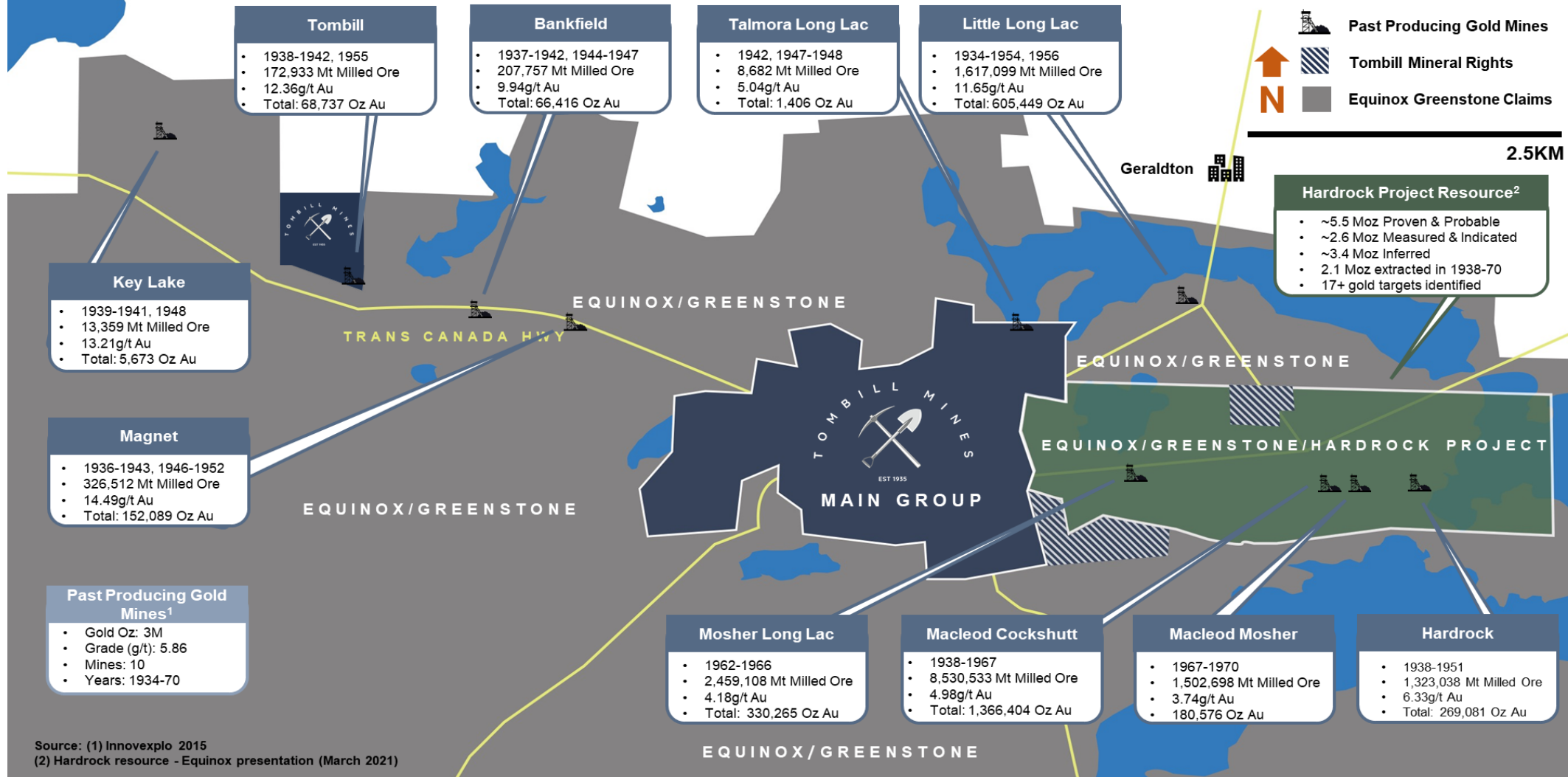
Main Insiders acquired control in 1981. Patient capital

F-Zone plunge confirmed in mid-2021

GERALDTON GOLD CAMP PAST PRODUCERS – 1934-70



HIGH GRADE EXTRACTED. LIMITED FOCUS THEN ON LOW GRADE NEAR SURFACE



Source: (1) Innovexpl 2015
 (2) Hardrock resource - Equinox presentation (March 2021)