

## EXECUTIVE SUMMARY – NOVEMBER 2021

### ABOUT TOMBILL

- Founded and staked in 1935, by Tom Johnson and his brother Bill. We are a mineral exploration company, primarily gold, comprising 74 royalty-free claims (60 owned/patented), of which Tombill Main Group is 58 claims. We own two past-producing gold mines
- Based in Geraldton, Ont., and part of the Geraldton Gold Camp, adjacent to Hardrock Project and are surrounded by their parent Greenstone Gold Mines. Tombill Main Group is split in two by the Trans Canada Hwy
- Our team comprises 3 senior geologists/executives who were instrumental in the success of the Hardrock campaign
- Until earlier this year, Tombill has had no exposure to modern day exploration since the 1950's. In January 2021, we embarked on a multi-million exploration plan comprising: drilling, near-surface drilling and surface work
- Aim is to prove out westward plunge gold resource flowing from Hardrock, identify multiple zones, and pursue open pit opportunities

### INVESTMENT HIGHLIGHTS

#### "CLOSEOLOGY" PLAY IN WORLD CLASS GERALDTON CAMP

- "Donut hole" surrounded by and on strike with Hardrock
- World class gold mine being built on door-step
- Neighbor claims construction begins this quarter, production 2024

#### SIZEABLE LOCAL GOLD MINERALIZATION ON STRIKE WITH TOMBILL

- Hardrock deposit: ~4.3km strike, of which:
  - 5.5M Proven & Probable (open pit)
  - 7.1M M + I; 3.1M Inferred (ug west plunge from open pit)
  - 2.1M extracted 1938-70
- 3.1Moz high grade mined in Camp from 1930's-70's
- Until Jan 2021, Tombill not explored since 1970's

#### ESTABLISHED CONTINUITY OF STRIKE/RESOURCE OVER TOMBILL

- Established resource continuation with various holes up to 283m from our border. 46m significant assays weighted at 6.01 g/t
- Drilled shallower amongst our past-producing Talmora Mine
- Aim to make the Geraldton Camp a much larger resource pool

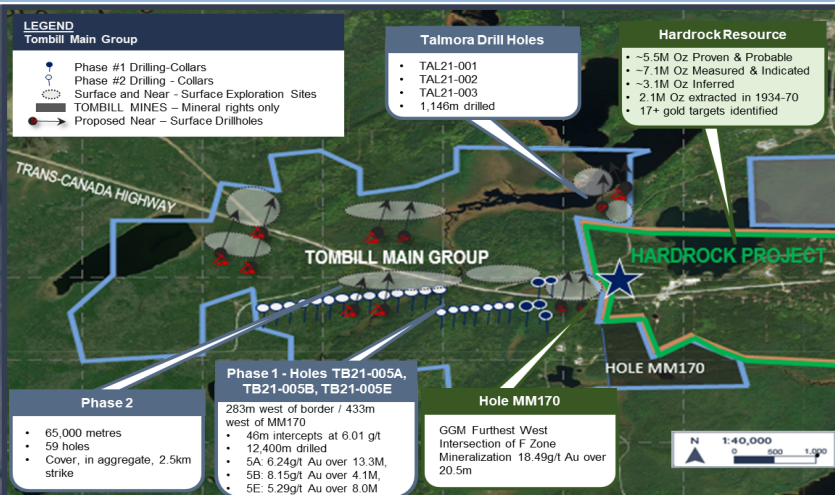
#### TOP TEAM EXECUTING IN OPTIMAL MINING JURISDICTION / LOCATION

- "A" Team: Includes 3 sr geo's and execs who proved Hardrock and invested multi-millions of capital from 2008 to 2020
- Royalty-Free
- Own patents
- Ultimate Jurisdiction/Top Location
- No exploration permits required

#### NEIGHBOUR VALUATION TARGET

- Dec 2020, Centerra divest 50% interest (non control) to Orion: US\$225M + US\$75M

## TOMBILL MAIN GROUP – EXPLORATION & DRILLING PROGRAM

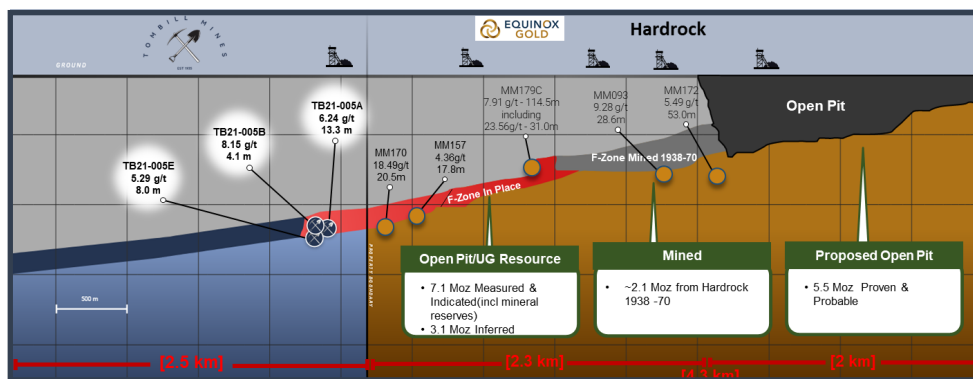


#### SIGNIFICANT RESULTS OF PHASE 1 DRILL PROGRAM TO DATE

Hole-ID 46M	From (m)	To (m)	Length (m)	Au (g/t)	Zone
TB21-001A	1191	1192	1.0	6.03	F
TB21-002 (drilled below F-Zone)	768	769	1.0	4.21	HW
	1203	1203.8	0.8	6.90	K
TB21-004	757.7	758.7	1.0	5.29	UM
	1242.4	1244.5	2.1	4.50	F
	1018.5	1022.7	4.2	2.99	SP
TB21-005A	1078	1081.5	3.5	2.05	F
	1095	1108.3	13.3	6.24	F
TB21-005B	1214.0	1218.1	4.1	8.15	F
	1085.0	1087.0	2.0	6.08	F
TB21-005E	1102.0	1110.0	8.0	5.29	F
	1152.0	1154.0	2.0	13.88	F2
	1162.0	1165.0	3.0	9.17	F2

## ON STRIKE WITH HARDROCK'S RESOURCES (INCL. F-ZONE)

### LONG SECTION OF THE GERALDTON CAMP LOOKING NORTH 3



#### Hardrock: Dimension of F-Zone <sup>(1) (2)</sup>

- Gpt: > 6 g/t
- Height: 100 - 150m
- Width: 25 - 35m
- Density ratio: 2.7x
- Strike: 4.3km, plunging east to west

**Tombill: Goal is to continue F-Zone dimensions enjoyed by Hardrock over our 2.5KM strike. To date, 46m intercepts at weighted 6.01g/t up to 283m from border, of which:**

- Hole 5A: 6.24g/t – 13.3m
- Hole 5B: 8.15g/t – 4.1m
- Hole 5E: 5.29g/t – 8.0m / 13.88g/t – 2.0m (F2-Zone) / 9.17g/t – 3.0m (F2)
- Strike: 250M from our border, 433M from Hardrock's most Westward Hole MM170 (18.5g/t – 20.5m):
- Results and lithologies consistent with Hardrock's

SOURCE:  
(1) InnovExplo Report (July 4, 2014)  
(2) Technical Report by Tim Twomey (July 17, 2020)  
(3) Premier press release (November 4, 2010).

### CROSS SECTION VIEW OF DEEP DRILLING TO DATE

